

# JESSY-JY PULPA & PAPEL

CIMESA



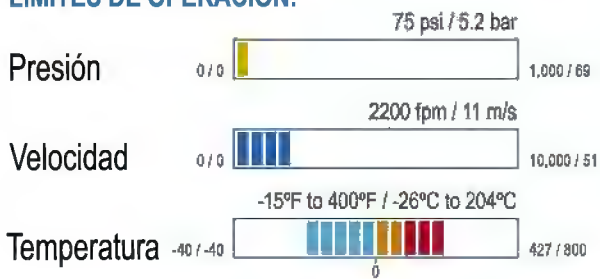
CIERRE PARTIDO SIMPLE



## MATERIALES:

Acero Inoxidable 316  
Carbón Grafitado  
Carburo de Silicio  
Cerámica  
Junta Tórica: VITON y EPDM.

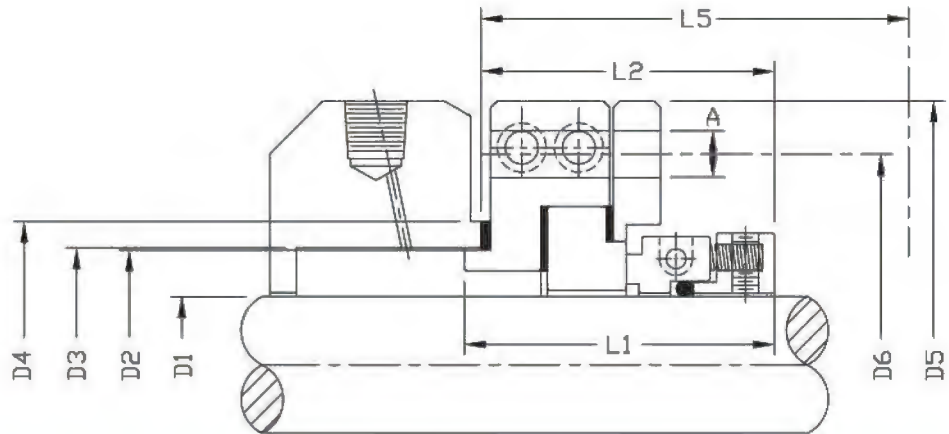
## LIMITES DE OPERACIÓN:



\* Depende del sello secundario y materiales de las caras.



El cierre partido simple está diseñado para instalaciones de equipos inaccesibles sin desmontar la bomba.



**TABLA DE DIMENSIONES**

D1	D2	D3		D4	D5	D6	L1	L2	L5	A
		Min.	Max.							
2.000	3.153	2.750	3.125	2.770	5.500	4.125	2.750	2.500	2.758	0.562
2.125	3.278	2.875	3.875**	2.875	6.000	4.375	2.750	2.500	2.758	0.687
2.250	3.403	3.000	3.375	3.250	6.250	5.000	2.750	2.500	2.758	0.687
2.375	3.528	3.250	3.500	3.250	6.250	4.750	2.750	2.500	2.758	0.687
2.500	3.653	3.375	4.750**	3.375	6.250	4.812	2.750	2.500	2.758	0.687
2.625	3.778	3.500	3.875	3.625	6.250	5.125	2.750	2.500	2.758	0.687
2.750	3.903	3.625	4.125	3.750	7.750	5.125	2.750	2.500	2.758	0.687
2.875	4.028	3.875	4.500	5.000	6.539	5.422	2.750	2.500	2.758	0.687
3.000	4.153	3.937	4.187	4.000	7.875	5.625	2.750	2.500	2.703	0.687
3.125	4.278	4.125	4.750	4.123	6.789	5.672	2.875	2.625	2.812	0.812
3.250	4.403	4.250	4.750	4.248	8.250	6.000	2.875	2.625	2.812	0.812
3.375	4.528	4.375	4.875	4.373	8.250	6.125	2.875	2.625	2.812	0.812
3.500	4.653	4.500	5.000	4.498	8.250	6.250	2.875	2.625	2.812	0.812
3.625	4.778	4.625	5.250	4.623	7.289	6.172	2.875	2.625	2.812	0.812
3.750	4.903	4.687	5.125	4.748	8.750	6.500	2.875	2.625	2.812	0.812
3.875	5.028	4.875	5.250	4.873	8.750	6.625	2.875	2.625	2.812	0.812
4.000	5.153	5.000	5.375	4.998	8.812	6.625	2.875	2.625	2.812	0.812
4.125	5.278	5.000	-	5.125	7.789	6.672	2.875	2.625	2.812	0.812
4.250	5.403	5.250	5.750	5.250	9.250	6.875	2.875	2.625	2.812	0.812
4.375	5.528	3.375	5.875	5.375	9.250	7.250	2.875	2.625	2.812	0.812
4.500	5.653	5.500	6.000	5.500	9.500	7.312	2.875	2.625	2.812	0.812
4.625	5.778	5.500	-	5.625	8.289	7.172	2.875	2.625	2.812	0.812
4.750	5.903	5.750	6.250	5.750	9.750	7.750	2.875	2.625	2.812	0.812
4.875	6.028	5.750	-	5.875	8.539	7.422	2.875	2.625	2.812	0.812
5.000	6.153	6.312	6.750	6.000	10.750	8.125	2.875	2.625	3.812	0.812
5.125	6.278	-	5.995	6.125	8.789	7.672	2.875	2.625	3.812	0.812
5.250	6.403	-	6.120	6.250	8.914	7.797	2.875	2.625	3.812	0.812
5.375	6.528	-	6.245	6.375	9.039	7.922	2.875	2.625	3.812	0.812
5.500	6.653	6.812	7.375	6.500	11.750	8.750	2.875	2.625	3.812	0.937
5.625	6.778	-	6.495	6.625	9.289	8.172	2.875	2.625	3.812	0.937
5.750	6.903	7.062	7.625	6.750	12.000	9.093	2.875	2.625	3.812	0.937
5.875	7.028	-	6.745	6.875	9.539	8.422	2.875	2.625	3.812	0.937
6.000	7.153	-	6.870	7.000	9.664	8.547	2.875	2.625	3.812	0.937

