

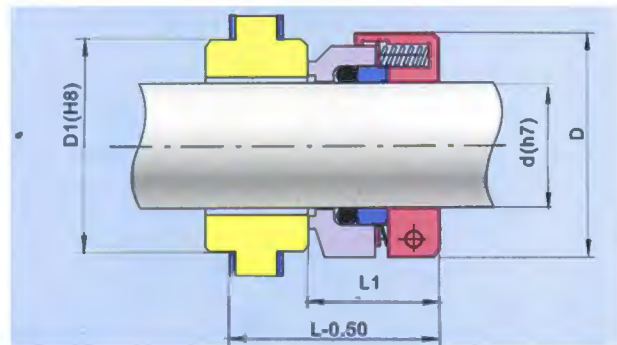
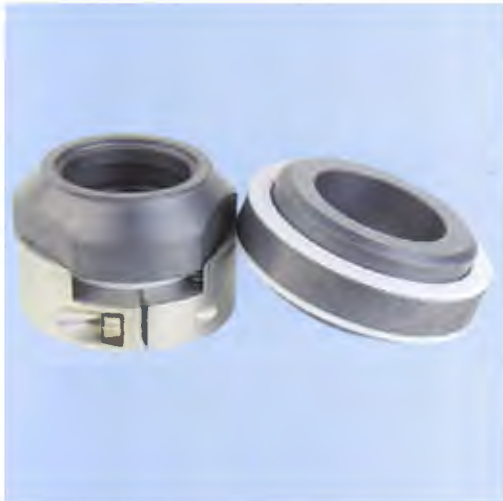
CIERRE MECÁNICO TIPO: CMEXT

Datos Técnicos:

Presión: 15 BAR

Temperatura: -40 a 220°C

Velocidad: 15 m/seg.



| Modelo | Ø | D1 | D1 | L | L1 |
|----------|-----|-----|-------|------|----|
| CM46-18 | 18 | 44 | 36.5 | 51.5 | 38 |
| CM46-20 | 20 | 46 | 39.7 | 51.5 | 38 |
| CM46-22 | 22 | 48 | 39.7 | 51.5 | 38 |
| CM46-24 | 24 | 50 | 42.8 | 51.5 | 38 |
| CM46-25 | 25 | 52 | 42.8 | 51.5 | 38 |
| CM46-28 | 28 | 55 | 50.8 | 58.5 | 38 |
| CM46-30 | 30 | 58 | 54 | 58.5 | 38 |
| CM46-32 | 32 | 60 | 54 | 58.5 | 38 |
| CM46-33 | 33 | 60 | 57.15 | 58.5 | 38 |
| CM46-35 | 35 | 62 | 57.15 | 58.5 | 38 |
| CM46-38 | 38 | 65 | 63.5 | 58.5 | 38 |
| CM46-40 | 40 | 68 | 66.7 | 58.5 | 38 |
| CM46-43 | 43 | 70 | 69.8 | 58.5 | 38 |
| CM46-45 | 45 | 72 | 69.8 | 62.5 | 42 |
| CM46-48 | 48 | 75 | 79.4 | 67.5 | 42 |
| CM46-50 | 50 | 78 | 79.4 | 67.5 | 42 |
| CM46-53 | 53 | 80 | 82.5 | 67.5 | 42 |
| CM46-55 | 55 | 80 | 85.7 | 67.5 | 42 |
| CM46-58 | 58 | 83 | 89.9 | 67.5 | 42 |
| CM46-60 | 60 | 86 | 89.9 | 67.5 | 42 |
| CM46-63 | 63 | 90 | 92.1 | 67.5 | 42 |
| CM46-65 | 65 | 93 | 95.2 | 67.5 | 42 |
| CM46-68 | 68 | 98 | 98.4 | 67.5 | 42 |
| CM46-70 | 70 | 98 | 98.4 | 67.5 | 42 |
| CM46-75 | 75 | 105 | 103.2 | 67.5 | 42 |
| CM46-80 | 80 | 109 | 114.3 | 67.5 | 42 |
| CM46-85 | 85 | 114 | 120.6 | 67.5 | 42 |
| CM46-90 | 90 | 120 | 127 | 67.5 | 42 |
| CM46-95 | 95 | 125 | 127 | 67.5 | 42 |
| CM46-100 | 100 | 130 | 133.3 | 67.5 | 42 |