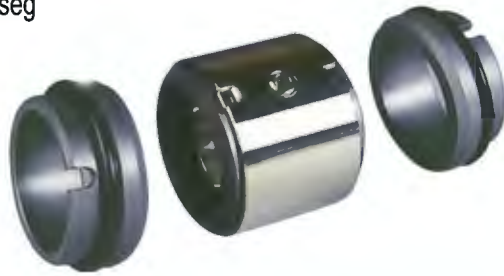
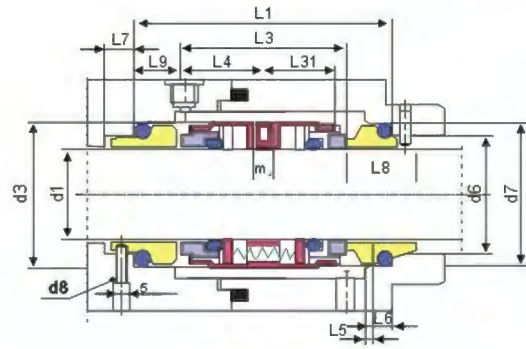


# CIERRE MECÁNICO TIPO: CM74D

Datos Técnicos:  
 Cierre Doble.  
 No equilibrado.  
 Independiente del sentido de giro.  
 Multimuelle.  
 Temperatura: -50°C a 200°C  
 Presión: 16 BAR  
 Velocidad: 20 m/seg



d <sub>1</sub>	d <sub>3</sub>	d <sub>6</sub>	d <sub>7</sub>	d <sub>8</sub>	L <sub>1</sub>	L <sub>3</sub>	L <sub>4</sub>	L <sub>5</sub>	L <sub>6</sub>	L <sub>7</sub>	L <sub>8</sub>	L <sub>9</sub>	L <sub>31</sub>	m <sub>2</sub>
18	33	27	33	3	61	38	19	2	5	9	19.5	11.5	17	M5
20	35	29	35	3	61	38	19	2	5	9	19.5	11.5	17	M5
25	40	34	40	3	61	38	19	2	5	9	19.5	11.5	17	M5
30	45	39	45	3	62	39	19.5	2	5	9	19.5	11.5	17.5	M6
35	50	44	50	3	62	39	19.5	2	5	9	19.5	11.5	17.5	M6
40	57	51	58	4	70	42	21	2	6	9	22	14	19	M6
45	62	56	63	4	70	42	21	2	6	9	22	14	19	M6
50	67	62	70	4	73	43	21.5	2.5	6	9	23	15	19.5	M6
55	72	67	75	4	73	43	21.5	2.5	6	9	23	15	19.5	M8
60	81	72	80	4	86	56	28	2.5	6	9	23	15	23.5	M8
65	86	77	85	4	85	55	27.5	2.5	6	9	23	15	24.5	M8
70	91	83	92	4	92	56	28	2.5	7	9	26	18	23.5	M8
75	99	88	97	4	92	56	28	2.5	7	9	26	18	25.5	M8
80	104	95	105	4	92.5	56	28	3	7	9	26.2	18.2	25.5	M8
85	109	100	110	4	92.5	56	28	3	7	9	26.2	18.2	25	M8
90	114	105	115	4	92.5	56	28	3	7	9	26.2	18.2	25.5	M8
95	119	110	120	4	90.5	56	28	3	7	9	25.2	17.2	25	M8
100	124	115	125	4	90.5	56	28	3	7	9	25.2	17.2	25	M8
105	138	122.2	134.3	5	108	68	34	2	10	9	30	20	30.5	M8
110	143	128.2	140.3	5	110	70	35	2	10	9	30	20	31.5	M8
115	148	136.2	148.3	5	110	70	35	2	10	9	30	20	31.5	M8
120	153	138.2	150.3	5	110	70	35	2	10	9	30	20	31.5	M8
125	158	142.2	154.3	5	110	70	35	2	10	9	30	20	31.5	M8
130	163	146.2	158.3	5	110	70	35	2	10	9	30	20	31.5	M8
135	168	152.2	164.3	5	110	70	35	2	10	9	30	20	31.5	M8
140	173	156.2	168.3	5	110	70	35	2	10	9	30	20	31.5	M8
145	178	161.2	173.3	5	110	70	35	2	10	9	30	20	31.5	M8
150	183	168.2	180.3	5	114	70	35	2	10	9	32	22	31.5	M8